

The Strategy for Patient-Oriented Research in Ontario – the Ontario SPOR SUPPORT Unit (OSSU)

Dr. Mark Roseman

Ontario Shores' 4th Annual Research Day
February 24, 2015

Outline

- What is SPOR?
- National Networks
- SUPPORT Units
- Ontario SPOR SUPPORT Unit (OSSU)

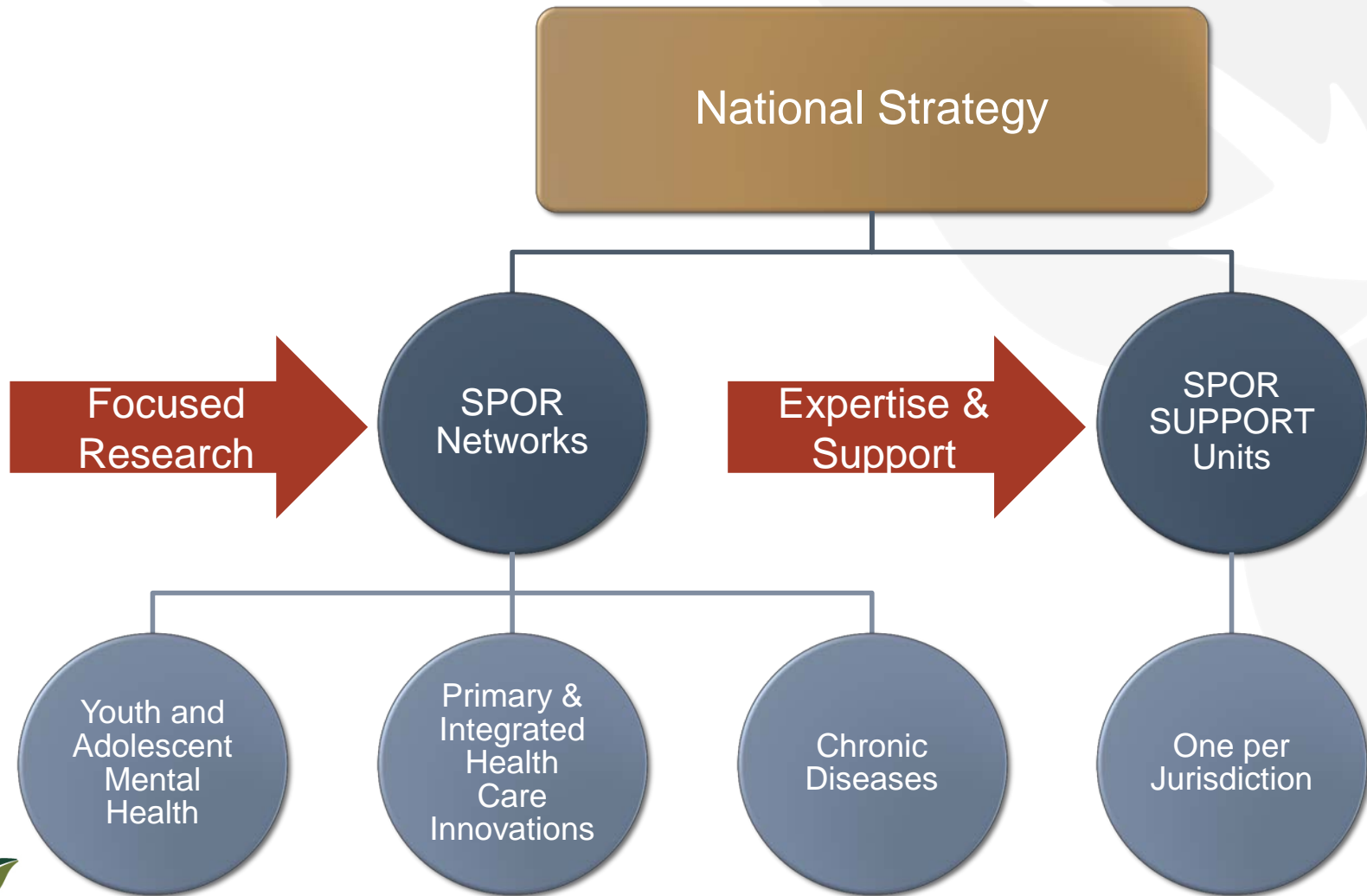
What is SPOR?

- Strategy for Patient-Oriented Research
- 5-year, joint federal, provincial, territorial initiative to foster:
 - Evidence-informed health care with system-wide impact.
 - Enhanced patient engagement and partnerships.
 - Innovative collaboration among researchers, clinicians, patients, health system administrators, policy makers, health charities, industry, etc.
- Engages a coalition dedicated to the integration of research into care and the translation of research results into improved health outcomes.

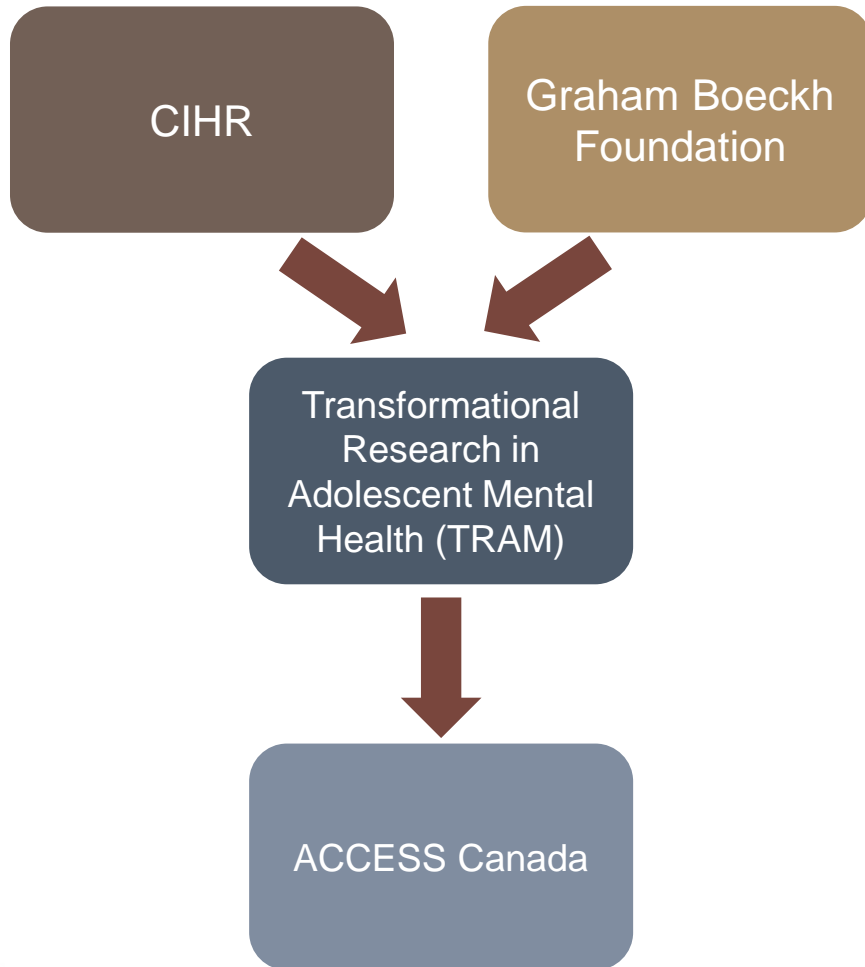
Principles

- **Patients need to be involved** in all aspects of the research to ensure questions and results are relevant and integrated into practice.
- Decision-makers and clinicians need to be involved throughout the entire research process to ensure **integration into policy and practice**.
- Funding is based on a **1:1 matching formula** with non-federal government partners to ensure relevance and applicability.
- Effective patient-oriented research requires a **multi-disciplinary approach**.
- SPOR is focused on first-in-human (and beyond) research designed to be transformative in nature and **improve patient outcomes** and the effectiveness and efficiency of the health care system.
- **SPOR is outcome driven** and incorporates performance measurement and evaluation as integral components of the initiative.

Elements of SPOR



Youth and Adolescent Mental Health



- ACCESS Canada mandate:
 - Improve youth (11 – 25 year olds) engagement and awareness of mental health issues leading to early identification of those in need.
 - Make appropriate, evidence-informed, youth-friendly mental health care accessible to youth as early as possible.
- \$12.5M over five years from CIHR, matched by the Graham Boeckh Foundation.

Primary and Integrated Health Care Innovations

- Network of networks – one network per jurisdiction.
- Supports evidence-informed transformation and delivery of primary and integrated health care, with mandate to develop, evaluate and scale up new integrated approaches to the delivery of care.
- Initial focus on individuals with complex health needs for whom integrated care is critical.
- \$12.5M over five years from CIHR, matched 1:1 by external partners.
- A multi-phase implementation process is currently underway.

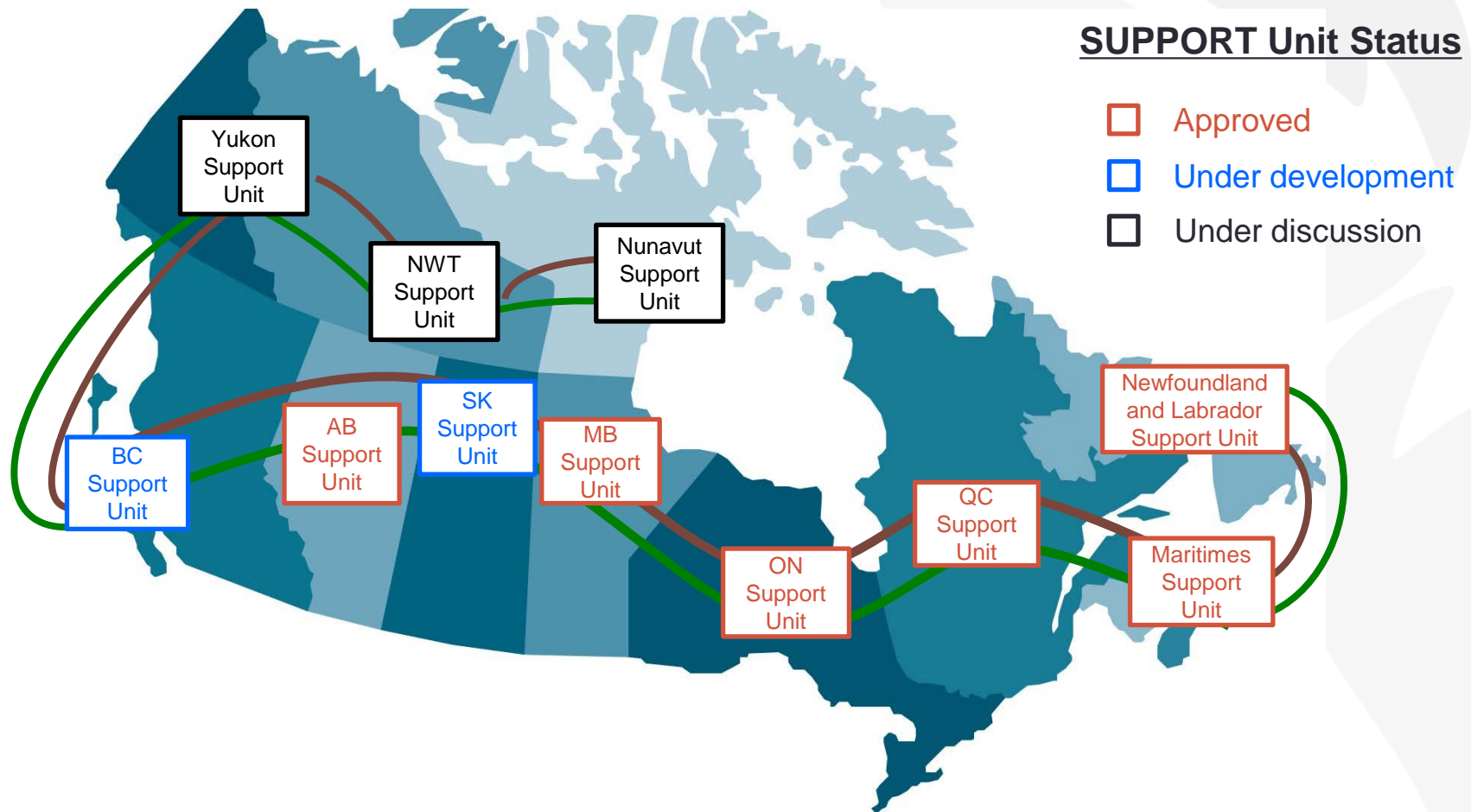
BeACCoN – Ontario's Network

- **Better Access and Care for Complex Needs**, with mandate to:
 1. Evaluate and scale up innovative approaches to prevention and care for individuals with complex needs across the life course (children, adults, older adults) in an integrated and cost-effective manner.
 2. Build capacity to support research and evaluation of system transformation and innovation provincially, nationally and internationally.
 3. Support evidenced-informed system transformation and delivery of primary and integrated health care.
- Also includes an innovation incubator with resources to evaluate and scale up promising ideas that can achieve system-level impact.

Chronic Diseases

- Call launched in October 2014, with full application due October 2015 and funding start date of January 2016.
- Focus on non-communicable chronic diseases.
- Objective is to translate existing and new knowledge into testing of innovations that can improve clinical science and practice and foster policy changes.
- Total funding available is \$50.8M:
 - \$1.0M for 20 Development Grants (max value \$50k).
 - \$49.8M for four distinct networks – each will receive up to \$12.45M over five years from CIHR, matched 1:1 by non-federal sources.

SPOR SUPPORT Units



SUPPORT Unit Core Functions

- Data Platforms and Services
- Methods Support and Development
- Real World Clinical Trials and Population Health Studies
- Consultation and Research Services
- Knowledge Translation and Implementation
- Career Development and Capacity Building

Ontario SPOR SUPPORT Unit

Collaborative Network

- Patients
- Researchers
- Clinicians
- Policy makers
- Industry representatives

Resources

- Expertise, infrastructure and funding to support those engaged in patient-oriented research.

Focus

- Data access
- Methodological and research services
- Knowledge Translation
- Clinical Trials
- Capacity Building



OSSU Goals

Engage & Connect

- Connect patients, researchers, industry, policy makers and providers.
- Engage patients in an impactful and meaningful way.
- Catalyze and support new collaborations.



Enhance Research & Capacity

- Accelerate research, knowledge translation and large scale intervention studies.
- Provide access to linked health data platforms.
- Build capacity through formal training programs and other mechanisms.



Accelerate Translation

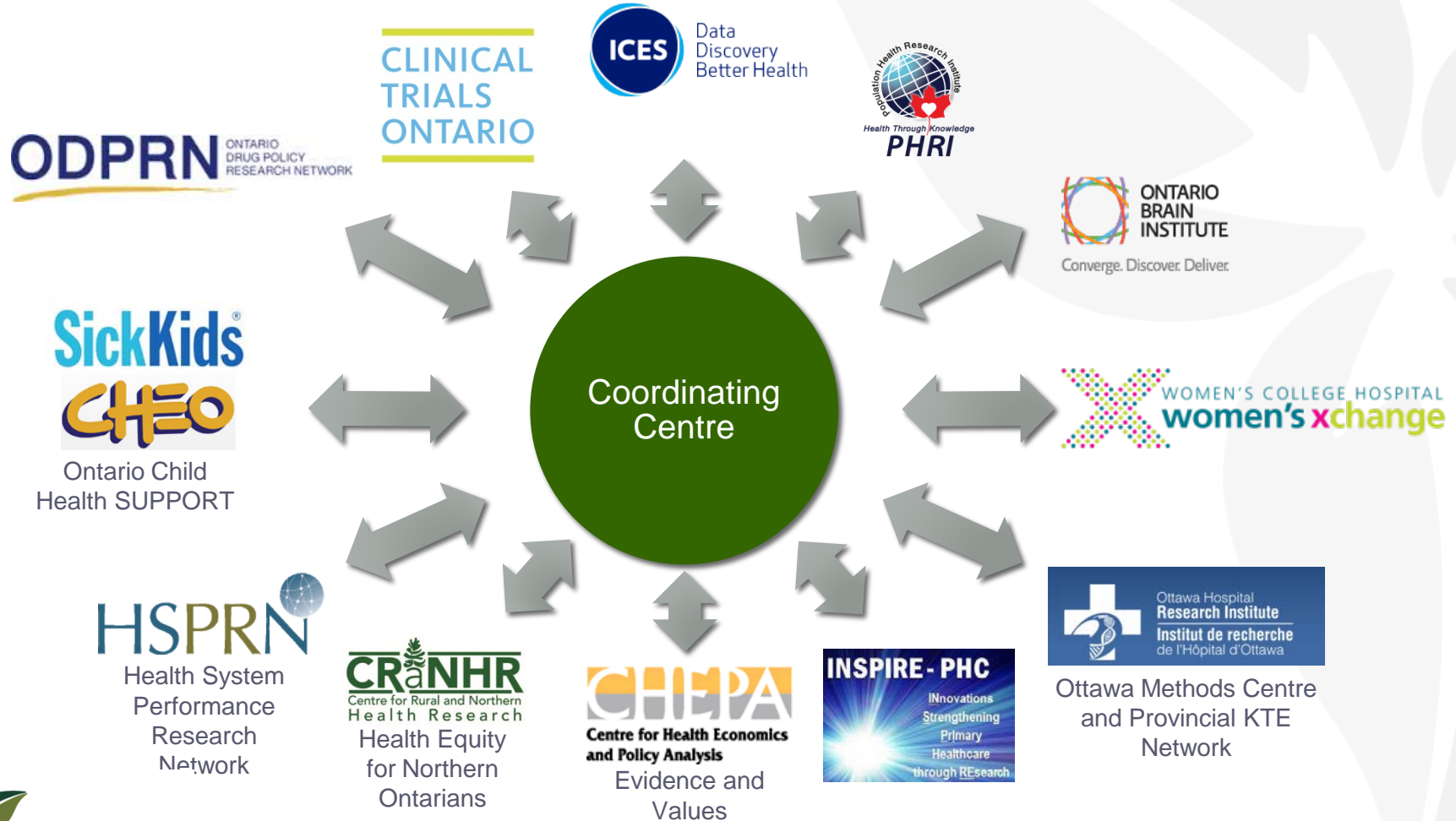
- Translate evidence into implementable policies and programs.
- Enhance uptake of research results.
- Facilitate knowledge exchange and dissemination of best practices.



Coordinating Centre

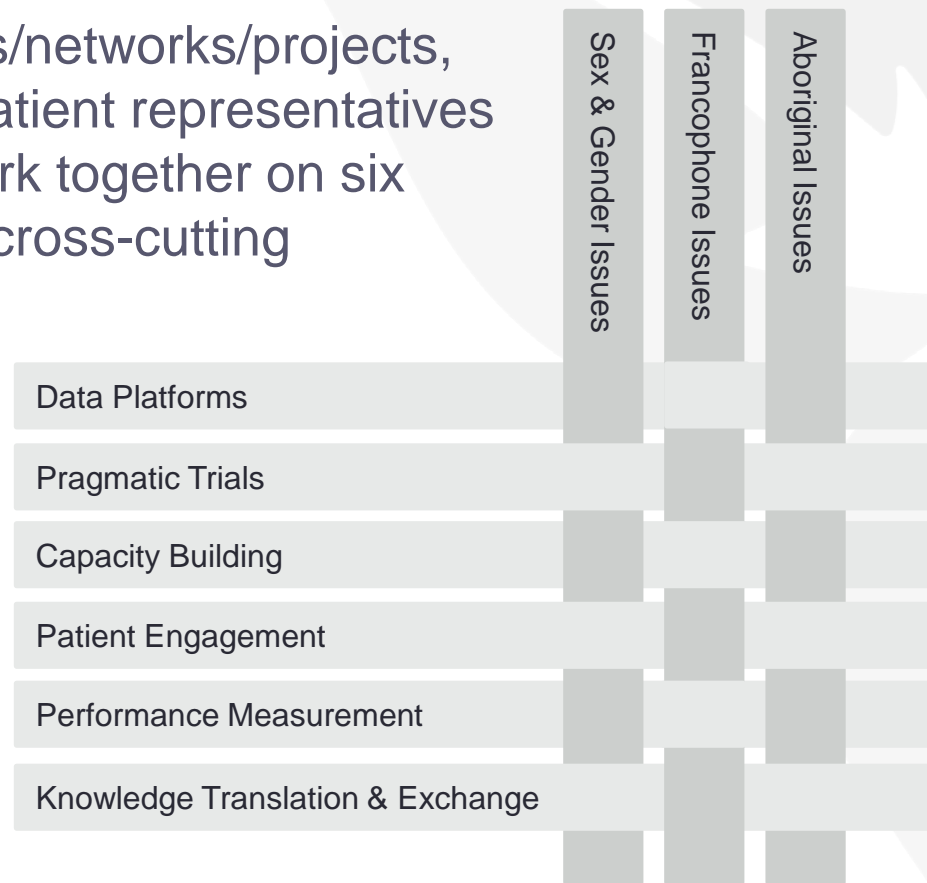
- Facilitates collaboration and integrates the work of the 12 centres and the theme networks.
- Conceptualizes and initiates activities that contribute to advancing the translational research agenda under SPOR.
- Serves as single window entry for researchers, policy makers, patients, health charities, industry, funders and providers seeking services and support.
- Brokers and connects policy and practice communities.
- Manages funding processes, oversees performance reporting and supports governance structure.

OSSU Centres



Working Groups

- Members of OSSU centres/networks/projects, non-OSSU researchers, patient representatives and other stakeholders work together on six working groups and three cross-cutting thematic groups.



Demonstration Projects



- Implementing Quality Based Procedures for stroke patients.
- Access to SPOR data platforms, services and methods experts will enhance scientific rigour and generalizability of the work to other conditions beyond stroke.



- Focus on guiding principles and science of patient engagement.
- Engaged in capacity building activities to enhance patient participation, and development of patient pool for participation in research.

IMPACT Awards

- Up to \$15 million allocated to support translational research projects that are **I**nnovative, **M**easurable, **P**atient-oriented, **A**ppropriate, **C**ollaborative and **T**ransformative.
- Open to researchers across Ontario, including those outside the 12 OSSU centres.
- Designed to bring patients, policy makers, private sector and providers together with OSSU expertise and resources.
- Selected through competitive, peer-reviewed process:
 - Launch of Call – November 3, 2014
 - Letter of Intent due – December 15, 2014
 - LOI Review Results – Late February 2015
 - Full Applications due – April 27, 2015
 - Final Decisions – June 2015

OSSU Website (ossu.ca)



- Features information on OSSU, the SPOR mandate, descriptions of OSSU Centres, IMPACT Award information, articles, events, a blog and a link to the OSSU Twitter account @ossutweets.

Mark Roseman, Ph.D., MBA
Director, Ontario SPOR SUPPORT Unit (OSSU)

Phone: 416-673-8431

Email: markroseman@ossu.ca

Web: www.ossu.ca