

# OSSU RESEARCH DAY 2022

THURSDAY, SEPTEMBER 29, 2022

#OSSU2022

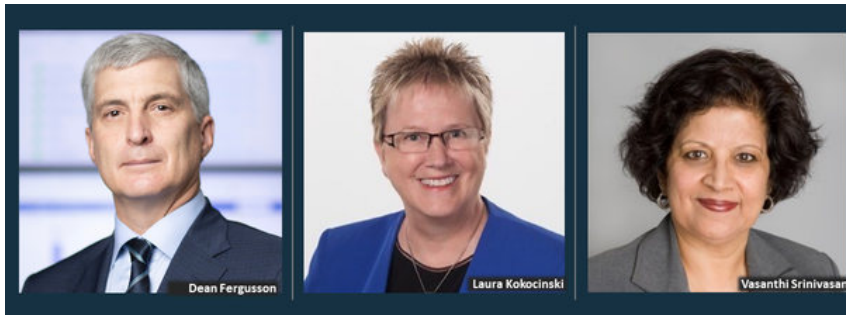


9:00 – 9:15

## WELCOME AND INTRODUCTIONS

The welcome and opening remarks will launch OSSU's Research Day and highlight what participants can expect from the day.

*Presented by Dean Fergusson, Laura Kokocinski and Vasanthi Srinivasan*



9:15 – 10:15

## HEALTHY DEBATE LIVE: LEARNING HEALTH SYSTEM

The audience will hear a variety of perspectives related to Learning Health Systems in Ontario, as it relates to engagement with citizens, implementation requirements and embedding equity into the design of future systems.

*Moderated by Seema Marwaha*

*Presented by Rob Reid, John Lavis, Nakia Lee-Foon, Tess Romain, Kerry Kuluski, Maureen Smith, Walter Wodchis*

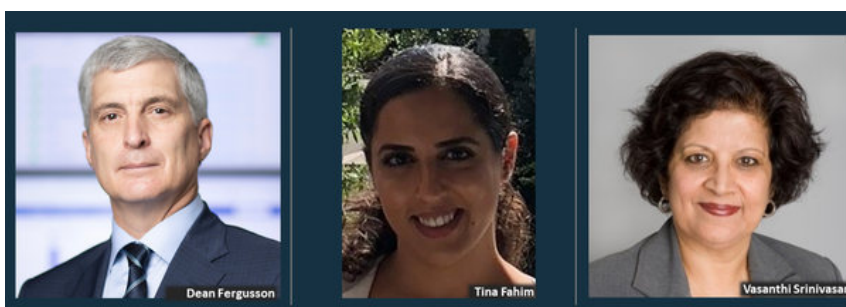


10:15 – 10:30

## OSSU PUBLICATION ANNOUNCEMENTS

In this session, participants will learn about two publications OSSU recently released and are now accessible on OSSU's website. Participants will hear how OSSU engaged the SPOR Evidence Alliance and Longwoods Publishing Corporation to create these resources for our community.

*Presented by Dean Fergusson, Tina Fahim and Vasanthi Srinivasan*



10:30 – 11:20

## EMPOWER RAPID FIRE SESSION (PART I)

These rapid fire presentations will showcase the outcomes of the OSSU's EMPOWER projects. To view the detailed list of presentations, see page 6.

*Moderated by Maureen Smith*

*Presented by Kerry Kuluski, David Wells, Monica Parry, Kednapa Thavron, Lisa Hawke, Lisa Duffett, Janice Lam, Peter Gill, Susan McKenzie, Ivana Ristevski, Ida McLaughlin, Kyla Naylor*



11:20 – 11:35

## HEALTH BREAK

We invite participants to have a stretch, refresh your coffee and get ready for the next series of informative sessions. Perhaps take a moment to tweet about your experience at the event. Be sure to use the event hashtag **#OSSU2022**

11:35 – 11:55

## SPOR CHRONIC DISEASE NETWORK – DIABETES ACTION CANADA (DAC)

This session will highlight the latest work and impacts of Diabetes Action Canada, a SPOR Chronic Disease Network, and how OSSU's research centres and initiatives, such as IC/ES, provide support.

*Presented by Gary Lewis and Tracy McQuire*



11:55 – 12:15

## **SPOR CHRONIC DISEASE NETWORK - LISTENING, LEARNING, LEADING: CANADIANS SEEKING SOLUTIONS AND INNOVATIONS TO OVERCOME CHRONIC KIDNEY DISEASE (CAN-SOLVE CKD NETWORK)**

We continue to feature highlights from SPOR's Chronic Disease Networks. This session will highlight the latest work and impacts of the CAN-SOLVE CKD Network and how OSSU's research centres and initiatives provide support.

*Presented by Amit Garg*



12:15 – 12:45

## **LUNCH**

Make sure to take a moment to stretch your legs and even a quick breath of fresh air outside if time allows. Make your way to the fridge or wherever food may be available. Enjoy your lunch!

12:45 – 13:30

## **EMPOWER RAPID FIRE SESSION (PART II)**

We continue to showcase the outcomes OSSU's EMPOWER projects in the second round of our rapid fire session. To view the details list of presentations, see page 7.

*Moderated by Annette McKinnon*

*Presented by Catherine Yu, Shelley Vanderhout, Yona Lunsky, Jennifer Walker, Ambreen Sayani, Beth Potter, Maureen Smith, Madison Foster, Tieghan Killackey, Manoj Lalú, Carol Mulder, Alies Maybee, Jennifer Stinson*

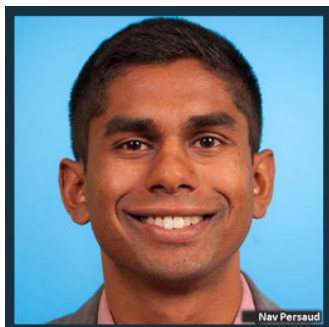


13:30 – 13:45

## **EQUITY DIVERSITY AND INCLUSION**

Participants will hear about equity, diversity and inclusion in health and health services research.

*Presented by Nav Persaud*

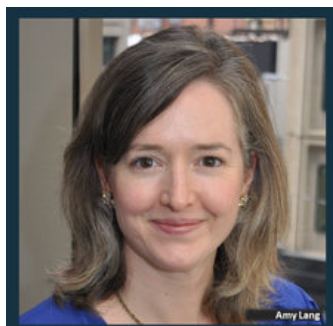


13:45 – 14:20

## **FUTURE DIRECTIONS FOR PATIENT ORIENTED RESEARCH**

The audience will hear about patient and public engagement programs and initiatives through the lens of CIHR's Strategy for Patient-Oriented Research (SPOR).

*Presented by Amy Lang*

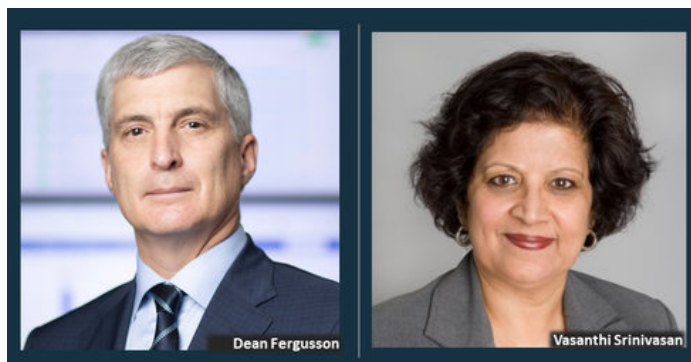


14:20 – 14:30

## **CONCLUDING REMARKS**

Participants will hear a summary of the day and what is next for the Ontario SPOR SUPPORT Unit.

*Presented by Dean Fergusson and Vasanthi Srinivasan*





**EMPOWER PROJECT**  
Engaging Multi-stakeholders for  
Patient Oriented-research Wider  
Effects and Reach Project

## **EMPOWER RAPID FIRE SESSION (PART I)** **10:30 TO 11:20**

*The goal of these presentations is to showcase the outcomes of the EMPOWER projects  
Moderated by Maureen Smith*

### **Taking action on the top 10 patient-oriented priorities in pediatric hospital care in Canada**

Presented by Peter Gill

### **EMPOWER Retinoblastoma: Engaging Patient Partners in Solving the Top 10 Priorities for Eye Cancer Research in Canada**

Presented by Ivana Ristevski

### **The RB Research Booklet: A Catalyst for Patient Involvement in Retinoblastoma Research**

Presented by Ivana Ristevski

### **Transplant Ambassador Program: Patients helping patients access kidney transplants**

Presented by Kyla Naylor & Susan McKenzie

### **Enhancing patient engagement in economic evaluation of health care interventions**

Presented by Kednapa Thavron

### **Empowering patient ambassadors to champion research outcomes that are a priority for people have lived experience with venous thromboembolism**

Presented by Lisa Duffett

### **Co-Designing Strategies to Address Alternate Level of Care Challenges:**

#### **Building Capacity across Ontario**

Presented by Kerry Kuluski & Ida McLaughlin

### **Building Capacity for Patient-Oriented Research (POR) in Clinical Trials, TranSLaTing the Evidence into Practice, Policy and Outcomes: The POR STEPP Digital Health Project in Ontario**

Presented by Monica Parry & David Wells

### **Wellness Quest: A health literacy and self-advocacy tool developed by youth for youth mental health**

Presented by Lisa Hawke & Janice Lam



## **EMPOWER RAPID FIRE SESSION (PART II)** **12:45 TO 13:30**

*The goal of these presentations is to showcase the outcomes of the EMPOWER projects  
Moderated by Annette McKinnon*

### **Putting shared decision-making into practice - barriers and facilitators to scaling up MyDiabetesPlan into primary care**

Presented by Catherine Yu

### **Co-creation of a framework to engage patients in preclinical laboratory research**

Presented by Manoj Lalu

### **Building a platform for meaningful patient partnership to accelerate "bench-to-bedside" translation of promising new therapies**

Presented by Madison Foster

### **"This is about my health": Digital tools to improve health care communication for people with intellectual and developmental disabilities (IDD)**

Presented by Yona Lunsky

### **Ontario First Nations Aging Study: from data to impact - research, sovereignty, and action**

Presented by Jennifer Walker & Carol Mulder

### **Co-building Equity-Mobilizing Partnerships in Community (EMPaCT) to increase impact through equitable patient-oriented partnerships in research, policy and practice**

Presented by Ambreen Sayani & Alies Maybee

### **Implementing sustainable collection of core patient-oriented health outcomes for pediatric inherited metabolic diseases - a multi-stakeholder workshop**

Presented by Beth Potter & Maureen Smith

### **#PartneringForPain: Taking Action Together on Family-Identified Priorities in Pediatric Chronic Pain**

Presented by Jennifer Stinson

### **Ensuring equity and inclusion in virtual care best practices to support vulnerable populations of youth with chronic pain**

Presented by Tieghan Killackey

### **Understanding COVID-19 among children and families: Parent engagement in a COVID-19 cohort study**

Presented by Shelley Vanderhout

### **Partnering with communities for children's COVID-19 vaccination**

Presented by Shelley Vanderhout

## PRESENTER PROFILES

Presenters biographies are listed in alphabetical order by last name



**Lisa Duffett** is a Hematologist with The Ottawa Hospital with a subspecialty in Thrombosis. Dr. Duffett is an Associate Scientist with the Ottawa Hospital Research Institute and an Assistant Professor with the University of Ottawa. Dr. Duffett's research interests include patient and public engagement in research. She is a co-lead of the Canadian Venous Thromboembolism Research Network (CanVECTOR) Patient Partner Platform and is actively involved in peer-reviewed grants to support patient engagement in research.



**Christine (Tina) Fahim** is a Scientist for the Knowledge Translation Program, St. Michael's Hospital and leads the Team for Implementation, Evaluation and Sustainability (TIES). She is an Assistant Professor in the Institute of Health Policy, Management and Evaluation at the University of Toronto and an Associate Scientist in the Department of Health Policy and Management at the Bloomberg School of Public Health, Johns Hopkins University. She obtained her MSc in Health Systems at the University of Ottawa followed by a PhD in Health Research Methods, Evidence and Impact from McMaster University and a postdoctoral fellowship at the Johns Hopkins University. Dr. Fahim's research focuses on the science and practice of knowledge translation to implement evidence-based interventions at the provider, organization, and health systems levels.



**Dean Fergusson** is an established international leader in evidence-based transfusion medicine and clinical trial methods. Dr. Fergusson has conceived, designed, and conducted randomized trials in transfusion medicine that have advanced knowledge and practice in defining the optimal blood product to transfuse, establishing timelines to administer transfusions, and evaluating transfusion alternatives. Throughout his career, he has received over \$263 million in peer reviewed research grants (including 156 CIHR grants), over \$74.5 million as a principal investigator (including 43 CIHR grants), and major salary awards from CIHR and the Province of Ontario. He is one of the most cited and impactful researchers, having published over 655 peer-reviewed journal articles, many in high impact journals.



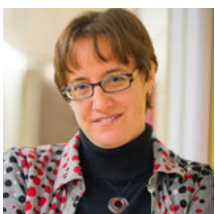
**Madison Foster** is a Project Manager working with the Blueprint Translational Research Group, led by Dr. Manoj Lalu and Dr. Dean Fergusson at the Ottawa Hospital Research Institute (OHRI). Madison's current research focuses on studying and facilitating patient engagement. Through this work the team aims to better align their research with patient priorities and interests, as well as create guidance for patient engagement. Previously, she completed a BSc in Biopharmaceutical Sciences and an MSc in Epidemiology, both at the University of Ottawa.



**Amit Garg** is the Associate Dean for Clinical Research, at the Schulich School of Medicine & Dentistry. He is also a Professor of Medicine and Epidemiology & Biostatistics at Western University and an internationally recognized nephrologist and clinical scientist. Dr. Garg serves as a staff nephrologist with London Health Sciences Centre, Scientist with the Lawson Health Research Institute, and Scientist with ICES. He is the Site Director of the ICES Western facility in London, Ontario, and Program Lead for the ICES Kidney, Dialysis & Transplantation Provincial Research Program (KDT). In 2014, Dr. Garg was awarded the inaugural Dr. Adam Linton Chair in Kidney Health Analytics, and in 2021, he was awarded the Hellmuth Prize for Achievement in Research, Western University's highest distinction for excellence in research. Dr. Garg is the Medical Lead for the Enhance Access to Kidney Transplantation and Living Donation Project with the Ontario Renal Network.



**Peter Gill** is a general paediatrician and an Associate Scientist at the SickKids Research Institute, an Assistant Professor in the Department of Paediatrics, University of Toronto and a Senior Associate at the Centre for Evidence-Based Medicine, University of Oxford. His research focuses on improving the care and outcomes for hospitalized children on the general pediatric inpatient unit. He co-founded and is vice-chair of the Canadian Paediatric Inpatient Research Network (PIRN).



**Lisa D. Hawke** is an Independent Scientist and the Unit Head of the Patient-Oriented Research Unit at the Centre for Complex Interventions, Centre for Addiction and Mental Health. She conducts research on various aspects of mental health, substance use, and health services, with a focus on patient and family engagement as a core component. By engaging patients and families in her work, alongside research and clinical teams, she aims to produce research that is relevant to a wide range of stakeholders, for real-world impact.



## PRESENTER PROFILES

Presenters biographies are listed in alphabetical order by last name



**Tiegghan Killackey** is a registered nurse and postdoctoral research fellow with Dr. Jennifer Stinson in the department of Child Health Evaluative Sciences at the Hospital for Sick Children. Tiegghan's research focuses on improving transitions in care across the lifespan, and she is specifically interested in qualitative and patient-oriented research. Tiegghan recently completed certification in Family Engagement in Research through McMaster University; she also holds a certificate in Advanced Training in Qualitative Health Research Methodology and a specialization in bioethics from the Joint Centre for Bioethics at the University of Toronto.



**Laura Kokocinski** is a life long resident of Northwestern Ontario. She retired from her CEO position with the North West Local Health Integration Network (LHIN) in May 2018 after serving the organization for eleven years. And most recently prior to her retirement, she led the implementation of the new 2017 Ontario LHIN Mandate including the successful transition of the former North West Community Care Access Centre home and community care services and programs into the LHIN. Laura has had a 47-year career leading strategic initiatives in both regional and provincial projects along with extensive leadership in education and health care including acute care, long-term care and community care. Laura's Masters and Doctoral thesis focused on continuing education in healthcare (nursing and healthcare leadership respectively).



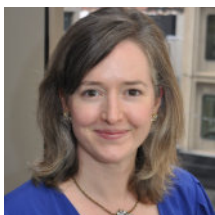
**Kerry Kuluski** is the Dr. Mathias Gysler Research Chair in Patient and Family Centered Care at the Institute for Better Health at Trillium Health Partners and Associate Professor at the Institute of Health Policy, Management and Evaluation at the University of Toronto. Prior to that she was a Scientist at Sinai Health System where she grew her program of research on patient and caregiver experience. She completed her PhD in Health Services Research at the University of Toronto and a Masters in Social Work at Lakehead University. She works in partnership with patients and families to co-design strategies that aim to improve health care experiences. She launched a new course at the University of Toronto on Patient and Caregiver Engagement in Research and is working with patient and caregiver partners, researchers and other health system leaders to develop curriculum on engagement and co-design for Ontario Health Teams.



**Manoj Lahu** is an Anesthesiologist at The Ottawa Hospital and an Associate Scientist the OHRI (Clinical Epidemiology and Regenerative Medicine Programs). He is an Associate Professor in uOttawa's Department of Anesthesiology and Pain Medicine with a cross-appointment in the Department of Cellular and Molecular Medicine. His current interests revolve around improving the preclinical to clinical translational pathway. This includes conducting preclinical and clinical systematic reviews, as well as meta-research on the conduct and reporting of laboratory-based studies. He co-supervises dry-lab projects. In addition, his wet lab is currently conducting multi-centre preclinical studies, and investigating extracellular vesicles in sepsis and lung injury using murine models.



**Janice Lam** is a PhD student in Organization Studies at the Schulich School of Business, York University in Toronto, Canada. Having previously earned an Honours BA in Psychology and a MSc in Organizational Behaviour and Human Resource Management, her research broadly examines the role of identity with equity, diversity, and inclusion in the workplace. She has been a member of the National Youth Action Council with the Centre for Addiction and Mental Health since 2015.



**Amy Lang** is the Executive Director of Patient Oriented Research at the Canadian Institutes of Health Research (CIHR), Canada's federal health research funding agency. As Executive Director, Amy provides leadership and expertise for Canada's Strategy for Patient Oriented Research (SPOR) and other patient-oriented research initiatives across CIHR. She founded Health Quality Ontario's patient and public engagement program, in four years shifting a highly technical organization to one where patient engagement was 'the way to do business'. More recently Amy led the development of Ontario Health's first patient and caregiver and stakeholder engagement strategies and its French Language Services framework, with significant emphasis on equity, diversity, inclusion and anti-racism. Amy has a BA and MA in Sociology from McGill University and a Ph.D. in Sociology and Political Science from the University of Wisconsin-Madison.



**John N. Lavis** supports policymakers and stakeholders to use evidence to address societal challenges. He is co-lead of and lead report writer for the Global Commission on Evidence to Address Societal Challenges, as well as co-lead of the COVID-19 Evidence Network to support Decision-making (COVID-END) and Rapid-Improvement Support and Exchange (RISE). He is the Director of the McMaster Health Forum and Director of the WHO Collaborating Centre for Evidence-Informed Policy. He is a Professor in the Department of Health Evidence and Impact at McMaster University and the Canada Research Chair in Evidence-Support Systems, as well as Adjunct Professor at the Africa Centre for Evidence at the University of Johannesburg. He holds an MD from Queen's University, an MSc from the London School of Economics, and a PhD (in Health Policy) from Harvard University.

## PRESENTER PROFILES

Presenters biographies are listed in alphabetical order by last name



**Nakia Lee-Foon** is the inaugural Learning Health Systems Associate at the Institute for Better Health (IBH), at Trillium Health Partners. She received her PhD in the Social and Behavioural Health Sciences stream at the Dalla Lana School of Public Health at the University of Toronto. Nakia did her postdoctoral fellowship in health equity at Dalla Lana. She has co-designed training programs for science and engineering teaching assistants at the University of Toronto and assisted with curriculum development of various public health aspects and research methodologies at the community, graduate and undergraduate levels. She is the Vice Chair for Planned Parenthood Toronto's board of directors. Dr. Lee-Foon sat on the board of directors for the Black Health Alliance where she was the Vice President from 2016-2018.



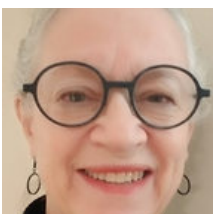
**Gary Lewis** completed his medical training in 1982 at the University of Witwatersrand in South Africa, followed by specialty training in Internal Medicine and then Endocrinology at the University of Chicago. He joined the Toronto General Hospital in 1990, was appointed Head of the Division of Endocrinology at University Health Network and Mount Sinai Hospitals in 2001, Director of the University of Toronto Division of Endocrinology and Metabolism in 2008 and Director of the Banting and Best Diabetes Centre, U of T, in 2011. He is a Full Professor in the Departments of Medicine and Physiology, University of Toronto and he holds the Sun Life Financial Chair in Diabetes and the Drucker Family Chair in Diabetes Research. Dr. Lewis has been honoured by several national and international organizations. Dr. Lewis is a Principal Investigator of Diabetes Action Canada, one of the chronic disease networks funded through the Strategy for Patient-Oriented Research (SPOR) Initiative.



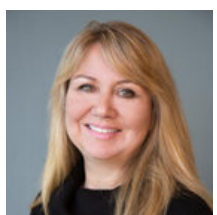
**Yona Lunskey** is Director of the Health Care Access and Developmental Disabilities (H-CARDD) research program and the Azrieli Adult Neurodevelopmental Centre at CAMH and Professor in the Department of Psychiatry at Temerty Faculty of Medicine, University of Toronto. Her research focuses on working together with patients and families and health care providers to identify challenges and co-design solutions to improve the health of people with developmental disabilities.



**Seema Marwaha** is a general internal medicine physician at St. Michael's Hospital and an Assistant Professor in the Department of Medicine at the University of Toronto. She completed her Master's in Education at the Harvard Graduate School of Education with a specialization in technology and innovation. She also completed a fellowship in Global Journalism at Toronto's Munk School of Global Affairs and Public Policy. Seema is a journalist and the Editor-in-Chief of Healthy Debate ([healthydebate.ca](http://healthydebate.ca)). She also has a monthly patient experience column in CMAJ. She is a regular contributor to CBC, Chatelaine and has written for Post Media, the Canadian Press and Macleans, among others.



**Alies Maybee** is and has been a patient partner in many areas of healthcare since 2011 including on research teams. She has explored and implemented novel approaches to patient engagement with the Centre for Digital Health Evaluation and helped co-initiate EMPaCT, a community of people with diverse lived-experiences focused on health equity at Women's College Hospital. Alies is one of 12 co-founders of the Patient Advisors Network (PAN), a national community of patient partners. PAN is a fully independent association of patient partners in Canada and as such, is unique.



**Susan McKenzie** is an experienced communications and fundraising professional who has worked to advance a number of charities across Canada. In 2010, after a year on dialysis, she received a new kidney from her husband's sister. Two of her three daughters have also been diagnosed with a rare genetic mutation (MUC1) which leads to kidney failure. Susan's experience helping her second daughter navigate the healthcare system toward a successful transplant further underscored the critical role of patients and donors could play to help each other through this difficult time. Together with Drs. Amit Garg and Kyla Naylor and their research team in London, Susan Co-Founded the Transplant Ambassador Program (TAP) in 2016, and continues to Chair the program today to help kidney patients and living donors navigate the transplant journey. Susan is also a patient partner with the Can-SOLVE CKD network and President of the Kidney Patient and Donor Alliance Canada.



**Annette McKinnon** is a member of the OSSU Patient Partner Working Group and was on the Editorial Board for this year's Special Edition of the Healthcare Quarterly. She is firm believer in the POR view of patients and caregivers as key partners in generating knowledge to improve evidence informed healthcare in Canada.

## PRESENTER PROFILES

Presenters biographies are listed in alphabetical order by last name



**Ida McLaughlin** is an experienced Leader within the philanthropy industry and private sector. She is a strong business development professional and is skilled in start-ups, nonprofit organizations, operations management, strategic planning, and team building. She has been a caregiver partner on several hospital initiatives, most recently as Chair of the Alternate Level of Care Patient and Caregiver Advisory Council which is leading a research study on delayed hospital discharge. She spent many years caring for her Aunt who experienced many discharge delays from hospital. Her story is shared in "Hallway Health Care: A System Under Strain".



**Tracy McQuire** has been with Diabetes Action Canada for over 5 years, first as the Manager, Research Operations and now as Executive Director. Tracy brings more than 15 years of research project and program management experience as well as research operations and strategic planning expertise. Prior to joining Diabetes Action Canada, Tracy was the Business Manager for the Toronto General Hospital Research Institute at University Health Network (UHN), leading the strategic planning process and implementation strategy to align research priorities to clinical programs. She has also led many projects within UHN Research in her various roles in research safety and facilities planning. Tracy holds both a Bachelor's degree in Biology and a Master's Degree in Genetics from Queen's University and obtained her Project Management Professional (PMP) designation in 2012.



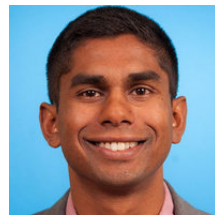
**Carol Mulder** is a scholar-practitioner currently serving Chiefs of Ontario as their Senior Scientist. Her contributions in that role include producing weekly COVID-19 reports for First Nations in Ontario and collaborating on research addressing First Nations COVID-19 modelling, the impact of COVID-19 on the healthcare system and other non-COVID-19 topics like the intergenerational impact of Diabetes in First Nations, among others. Carol also leads internal COO efforts related to performance measurement and analysis of regional First Nations survey data. Carol is also an epidemiologist, working recently to support COVID-19 response in several public health units. Prior to these roles, Carol has served many aspects of the health care sector in Ontario and abroad, from primary care to vaccine program tracking, hospital information systems management and health system design, implementation and monitoring with LHINS as well as provincial and national organizations.



**Kyla Naylor** is an epidemiologist, adjunct research professor at Western University and a staff scientist at ICES. Kyla's research primarily focuses on using administrative healthcare databases to improve access to kidney transplant and to improve post-transplant outcomes. More recently, her research has also focused on evaluating vaccine effectiveness of the COVID-19 vaccine in patients with kidney disease and in solid organ transplant recipients.



**Monica Parry's** clinical expertise has laid the foundation for a program of research to reduce the burden of cardiovascular disease and its complications. She is interested in sex and gender issues, engaging patients as partners in research, and is leading a research team to develop two novel web-based open-access patient partner and investigator decision aids; designed to build capacity for sex/gender uptake and patient-oriented research in Canada.



**Nav Persaud** is the Canada Research Chair in Health Justice, Staff Physician in the Department of Family and Community Medicine at St. Michael's Hospital in Unity Health Toronto, and Associate Professor in the Department of Family and Community Medicine at the University of Toronto. His research focuses on health equity or fairness, especially as it related to medicine access ([cleanmeds.ca](http://cleanmeds.ca)). He also compares national essential medicines lists in collaboration with the World Health Organization ([essentialmeds.org](http://essentialmeds.org)).



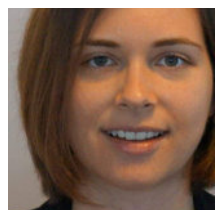
**Beth Potter** is an Associate Professor of Epidemiology and Public Health and the University Research Chair in Health Services for Children with Rare Diseases at the University of Ottawa; and an Affiliate Investigator at the Children's Hospital of Eastern Ontario Research Institute. Her research focuses on generating evidence to improve health care for children with rare genetic diseases and to inform newborn screening programs. Dr. Potter is Principal Investigator for INFORM RARE (<http://www.informrate.ca>) a Canadian research network that brings together patients and their family members, clinical providers, methodologists, and policy makers to focus on research questions prioritized by those who make decisions about rare disease care.

## PRESENTER PROFILES

Presenters biographies are listed in alphabetical order by last name



**Robert Reid** is the inaugural Hazel McCallion Research Chair in Learning Health Systems, a research chair jointly created by Trillium Health Partners and the University of Toronto. He is also Chief Scientist at the Institute for Better Health (IBH) and Senior Vice President of Science at Trillium Health Partners (THP). Dr. Reid holds an academic appointment at the University of Toronto, as Professor with the Institute of Health Policy, Management and Evaluation, and with the Department of Family and Community Medicine. He also holds academic appointments as Professor (part-time) with McMaster University's Department of Health Research Methods, Evidence, and Impact; Affiliate Investigator with Kaiser Permanente Washington Health Research Institute; and Affiliate Associate Professor with the University of Washington's School of Public Health and Community Medicine.



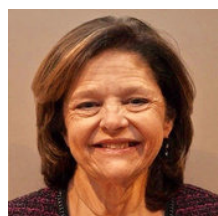
**Ivana Risteovski** is a parent of a retinoblastoma survivor who initially got involved in research in order to learn more about retinoblastoma to help inform decisions about care and to give back to the team that treated her son. Ivana is now a Parent in Research at SickKids with the retinoblastoma team and the co-lead of the Canadian Retinoblastoma Research Advisory Board where she helps to lead research projects and guide patient engagement in research.



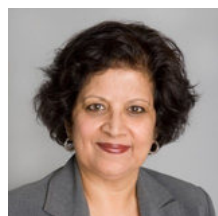
**Tess Romain** is the President of Partners Community Health, a not-for-profit, charitable organization focused on bringing healthcare services together around the needs of people living in Mississauga and West Toronto. Partners Community Health manages Camilla Care long-term care home and is leading the development of new health centre in Mississauga. Prior to joining PCH, she was the Transitional Regional Lead for Ontario Health (Toronto) and CEO of the Toronto Central Local Health Integration Network (LHIN). Finally, she led the COVID-19 response in Toronto Region for 16 months in collaboration with health and non-health partners, including the launch of the GTA Incident Management Structure (IMS). Before joining the LHIN, Tess was the Director of Strategy Management and Governance at Joseph Brant Hospital. She has also served in senior-level positions for the Minister of Health and Long-Term Care, and Public Infrastructure Renewal in Ontario.



**Ambreen Sayani** partners with patients to co-create knowledge through research in order to influence policy and improve health outcomes. She has held leadership roles across multiple healthcare industries and has consulted for private-sector organizations and governments. Ambreen is a Canadian Institutes of Health Research Transition-to-Leadership Fellow in Patient-Oriented research at Women's College Hospital, Toronto, Canada. She is a Health Equity Expert Advisor for the Canadian Partnership Against Cancer, co-chair of the Inequalities Network for the International Cancer Benchmarking Partnership, and Adjunct Professor in the School of Health Policy and Management at York University.



**Maureen Smith** has a long history of collaboration with the healthcare system subsequent to a rare disease diagnosis in childhood. She is a member of the OSSU Board of Directors and chairs OSSU's Patient Partner Working Group. Maureen is an enthusiastic, committed patient partner on several national and international patient partnered research studies. She has a special interest in patient and citizen engagement in evidence synthesis as well as pediatric core outcome set development. Maureen is the Chair of Cochrane's Consumer Network Executive and a Commissioner of the Global Commission on Evidence to Address Societal Challenges.



**Vasanthi Srinivasan** the former Assistant Deputy Minister of the Health Systems Strategy and Policy Division at the Ontario Ministry of Health and Long-Term Care (MOHLTC), is the founding Executive Director of the Ontario Strategy for Patient-Oriented Research (SPOR) SUPPORT Unit. Vasanthi led the MOHLTC Research Program and has held several senior management positions at the federal and provincial levels of government. During her tenure in the Policy Research Initiative of the Privy Council Office of Canada, she was seconded to the Cabinet Office in the United Kingdom to the Performance and Innovation Unit, and she has won awards for her policy work on immigration, indigenous and mental health policy issues. Vasanthi has her PhD from the University of Ottawa.



**Jennifer Stinson** is the Mary Jo Haddad Nursing Chair in Child Health and a Senior Scientist in the Child Health Evaluative Sciences (CHES) research program, within the Research Institute at The Hospital for Sick Children (SickKids) in Toronto. She is also a Nurse Practitioner in the Chronic Pain Program in the Department of Anesthesia and Pain Medicine at SickKids and a Professor in the Lawrence S. Bloomberg Faculty of Nursing, Department of Pediatric Anesthesia and Pain Medicine, and the Institute of Health Policy, Management and Evaluation at the University of Toronto. She leads the iOUCH lab which seeks to improve health outcomes in children and youth with painful chronic conditions using digital health therapeutics.

## PRESENTER PROFILES

Presenters biographies are listed in alphabetical order by last name



**Kednapa Thavorn** is a Senior Scientist and a Scientific Lead of Health Economics at the Ottawa Hospital Research Institute. She is also an Assistant Professor with the School of Epidemiology and Public Health at the University of Ottawa, an Adjunct Scientist at ICES (Full Status), and a Visiting Professor at the Faculty of Pharmacy, Chiang Mai University, Thailand. Her research focuses on health economics, health technology assessment, pharmacoepidemiology, health equity, care for people with complex needs, and population health.



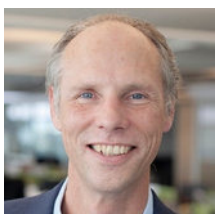
**Shelley Vanderhout** is a registered dietitian and postdoctoral fellow at CHEO and the University of Ottawa. Her research focus is mainly on patient and family engagement in research, and patient-oriented research, which is aimed at understanding how to carry out studies that apply to child and family life, as well as routine clinical care.



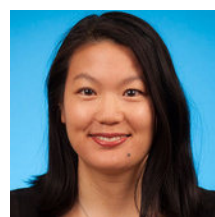
**Jennifer Walker** is a Haudenosaunee member of Six Nations of the Grand River with a Ph.D. in community health sciences (epidemiology) from the University of Calgary. She is an associate professor at McMaster University in the Department of Health Research Methods, Evidence, & Impact and the Research Hub Lead of the Indigenous Health Learning Lodge. Dr. Walker has an active research community-engaged research program in aging and dementia. She is the co-lead of the Canadian Consortium on Neurodegeneration and Aging's (CCNA) Team 18 - Issues in Dementia Care for Indigenous Populations and the lead for the Indigenous Cognitive Health Program. She has also led the validation of the Canadian Indigenous Cognitive Assessment tool and the implementation of the tool in Anishinabek communities of Northern Ontario.



**David Wells** is a patient partner with Diabetes Action Canada, the Maritime SPOR Support Unit, and Patients for Patient Safety Canada (associated with Healthcare Excellence Canada). He is also a co-investigator on the OSSU-funded Empower Award. David lives in Fredericton, New Brunswick, and he turned 83 years old on 2022-06-29. From 2005-2011 David chaired the New Brunswick Surgical Care Network Advisory Committee, which designed and implemented new procedures that reduced surgical wait times in New Brunswick 50% to 70%. During 2012-2015 he was the patient representative on the New Brunswick Primary Health Care Steering Committee, which changed the delivery of primary health care in New Brunswick by producing an extensive Guidelines document adopted for Family Medicine New Brunswick in 2017. In 2019 David qualified as a Certified Professional in Healthcare Information and Management Systems (CPHIMS-CA) with Digital Health Canada.



**Walter Wodchis** is Professor at the Institute of Health Policy, Management and Evaluation at the University of Toronto, Research Chair in Implementation and Evaluation Science and Senior Scientist at the Institute for Better Health, Trillium Health Partners, and Senior Adjunct Scientist at ICES. He is also co-lead for the International Foundation for Integrated care (IFIC) Canada. Building on a recent 5-year international study on implementing integrated Care Of Adults with Complex Health needs (iCOACH), Dr. Wodchis and a national research team were awarded a three-year, three-province grant to study the development of interprofessional team-based primary health care in January 2022. He holds a Bachelor of Mathematics (Waterloo), Master's in both Gerontology (Waterloo) and Economics (Michigan) and earned his doctorate in Health Services Organization and Policy (Health Economics) at the University of Michigan.



**Catherine Yu** is a Staff Endocrinologist at St. Michael's Hospital, Associate Professor of Faculty of Medicine and Dalla Lhana School of Public Health, and Associate Scientist in the Li Ka Shing Knowledge Institute of St. Michael's Hospital. She is the past co-Chair of the Clinical Practice Guidelines Dissemination and Implementation Committee of Diabetes Canada, where-in she has developed evidence-based and innovative strategies to put guidelines into practice and improve the quality of diabetes care across Canada. Other research interests include shared decision-making, e-health technologies, patient and clinician experiences in health care, mentorship in academic medicine, and continuing professional development. She is passionate about putting knowledge into practice and engaging patients in research and knowledge translation activities and is proud to work closely with her amazing research and stakeholder teams to provide the best care for Ontarians and Canadians.